

# Workflow Solutions™ //Insights

## Contrast Dashboard User Guide

The Workflow Solutions™ //Insights Contrast Dashboard provides injection and contrast metrics that may assist the healthcare provider in managing contrast delivery parameters for consistent efficiency and quality while providing benchmarking data that may allow for Radiology department goal setting.

## Contrast Dashboard - Summary



Figure 1 - Summary Screen for Contrast Dashboard shown above. Simulated data, for illustration only, subject to change.

- 1 Select Hospital/Enterprise
- 2 Select Computed Tomography (CT) or Magnetic Resonance (MR) Report View
- 3 Select Report Date: Analysis based on 12 months prior to selected date
- 4 Monthly injections: arrow indicates trend over previous month, number shows injections in current month, and box shows absolute change over prior month. Total is number of injections over past 12 months
- 5 Contrast Use: same parameters as in number 4  
Note: Approximate aggregated volume in mL
- 6 Syringe Use: same parameters as in number 4
- 7 Indicator Performance: the snapshot of indicator status as described in the Indicator Colors legend below
- 8 Time series of monthly injections, contrast use, or syringe kit usage for the past 12 months

## Indicator Status Colors



Indicator Performance color code is based on an algorithm that analyzes KPI trend change from the previous month, the magnitude of the change, and its relative position to the //Insights community benchmark.

# Workflow Solutions™ //Insights

## Contrast Dashboard User Guide

### Contrast Metrics Structure – Repeat Injections

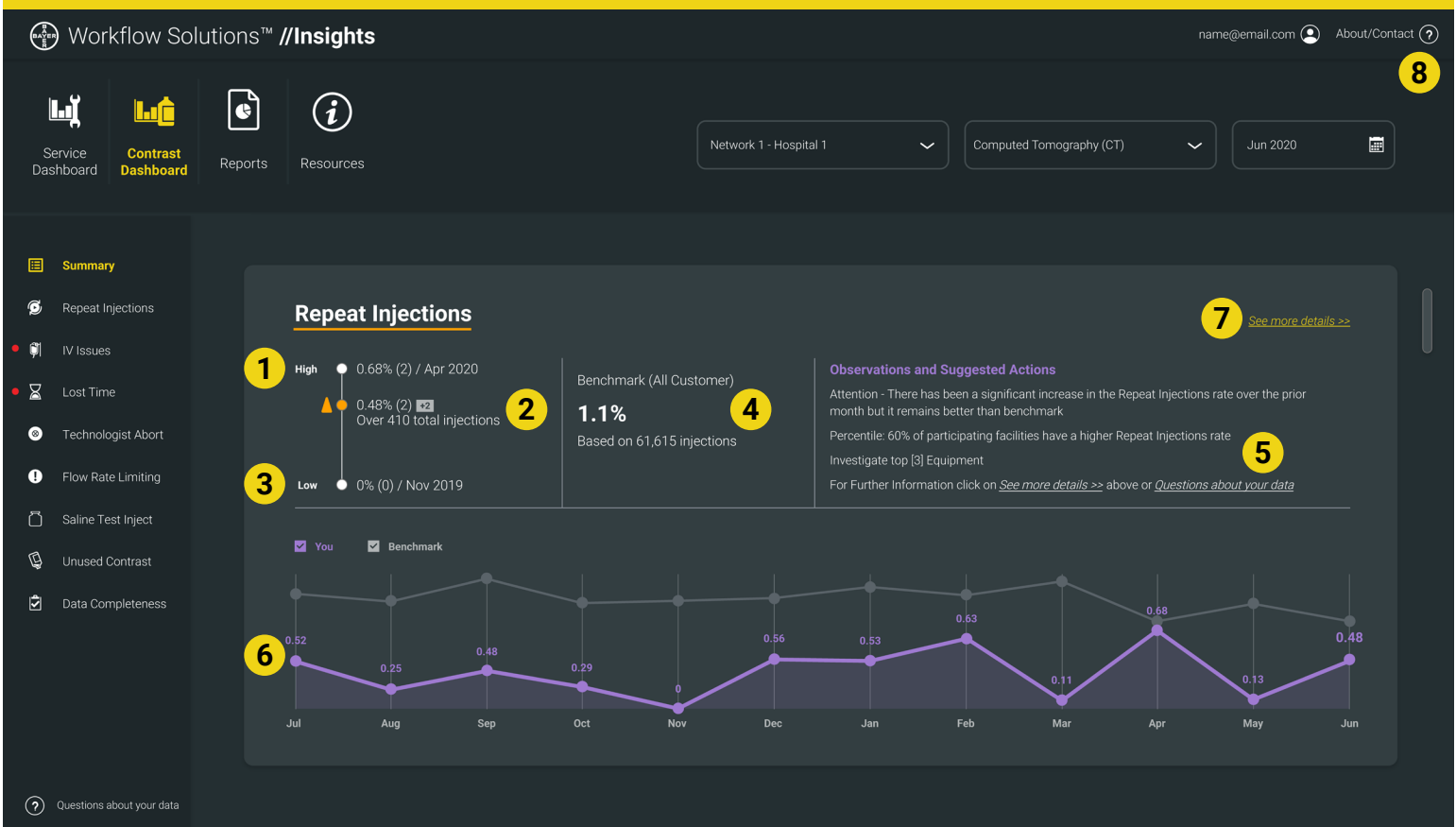


Figure 2 – Contrast Metrics Screen for Repeat Injections shown above. Simulated data, for illustration only, subject to change.

- 1

**Highest value within the reported 12 months**  
  
Arrow indicating trend of the selected month versus the prior month. Color coding as previously described in the Indicators Status Colors definition.  
  
2  
Values showing selected month indicator in percent and number of repeats as well as the absolute change versus prior months in the box
- 3

**Lowest value within the reported 12 months**
- 4

**Benchmark indicator value defined as the average across the contributing database facilities**
- 5

**Observations and Suggested Actions relating to the indicator over the report time frame**
- 6

**Time series of the indicator in relation to the benchmark**
- 7

**Link to see the indicator details; for example, by equipment, by protocol, and by user**
- 8

**Contact information for questions about your data and support; pop-up window with information for further assistance**

**Observations and Suggested Actions**

Observations reflect the change in the monthly trend of a KPI and a benchmark percentile positioning within the //Insights connected injector community.

Suggested actions are options to investigate or monitor the supporting detail fields for an additional breakdown of the KPI contrast metrics which may assist in facility development of action plans for improvement.

# Workflow Solutions™ //Insights

## Contrast Dashboard User Guide

### Contrast Key Performance Indicators

#### Repeat Injections



A repeat injection is identified when multiple injections complete normally within one study. Preventable repeat injections may result in an increase in contrast delivered, additional scan time, and increased radiation to the patient.

#### IV Issues



IV issues are identified when two injections are performed within one study, of which the first was aborted by the technologist. This injection workflow may indicate a possible IV or patient issue that required a repeat injection and can be targeted with a review of catheter size or placement policies.

#### Lost Time



Time is lost when injections are repeated as described in the Repeat Injections and IV Issues key indicators. This lost time quantification may indicate a disruption in normal workflow efficiency.

#### Technologist Abort



Technologist Abort events are characterized by manual disarms at any point during an injection. The events result in the premature termination of a programmed protocol and may indicate an interruption in normal workflow.

#### Flow Rate Limiting



Flow Rate Limiting events are characterized by a mechanical decrease in flow rate or automatic disarm when the chosen maximum pressure limit is reached. A decrease in flow rate during injection may lead to suboptimal image quality.

#### Saline Test Inject



Saline Test injections evaluate the patency of the IV pathway at the desired flow rate when delivered by the injection system. Studies have shown that this capability may reduce extravasations of contrast.

#### Unused Contrast



Unused Contrast is the approximate amount of contrast remaining in the syringe at the end of a single patient injection that must be appropriately discarded. In a multi-patient injection system, Unused Contrast is the approximate amount of contrast remaining in the device at the end of a delivery period.

#### Data Completeness



Data completeness represents the percentage of ancillary point of care data fields completed by the technologist on the injection system user interface. Regulatory compliance, reimbursement, and patient management may require documentation of contrast and injection parameters.

#### Questions and Support

For additional support please contact your local Bayer representative.

