

# Workflow Solutions //Insights



## Contrast Dashboard User Guide

The Workflow Solutions //Insights Contrast Dashboard provides injection and contrast metrics that may assist the healthcare provider in managing contrast delivery parameters for consistent efficiency and quality while providing benchmarking data that may allow for Radiology department goal setting.

### Contrast Dashboard – Summary



**FIGURE 1.** Summary Screen for Contrast Dashboard shown above. Simulated data, for illustration only, subject to change. Operating options and feature availability may vary by country. Check with a local product representative for Bayer.

1. Select Hospital/Enterprise
2. Select Computed Tomography (CT), Computed Tomography Multi Patient (CT-MP), or Magnetic Resonance (MR) Report View
3. Select Report Date: Analysis based on 12 months prior to selected date
4. Monthly Injections: arrow indicates trend over previous month, number shows injections in current month, and box shows absolute change over prior month.
  - Total is summary over past 12 months
5. Contrast Use: same parameters as in number 4  
**Note:** Approximate aggregated volume in mL
6. Syringe Use: same parameters as in number 4
  - When CT-MP Report View is selected, Syringe Use is replaced by MP Set Use and Patient Line Use
7. Indicator Performance: the snapshot of indicator status as described in the Indicator Colors legend below
8. Time series of Monthly Injections, Contrast Use, or Syringe Use for the past 12 months
  - When CT-MP Report View is selected, Syringe Use is replaced by MP Set Use and Patient Line Use

### Indicator Status Colors



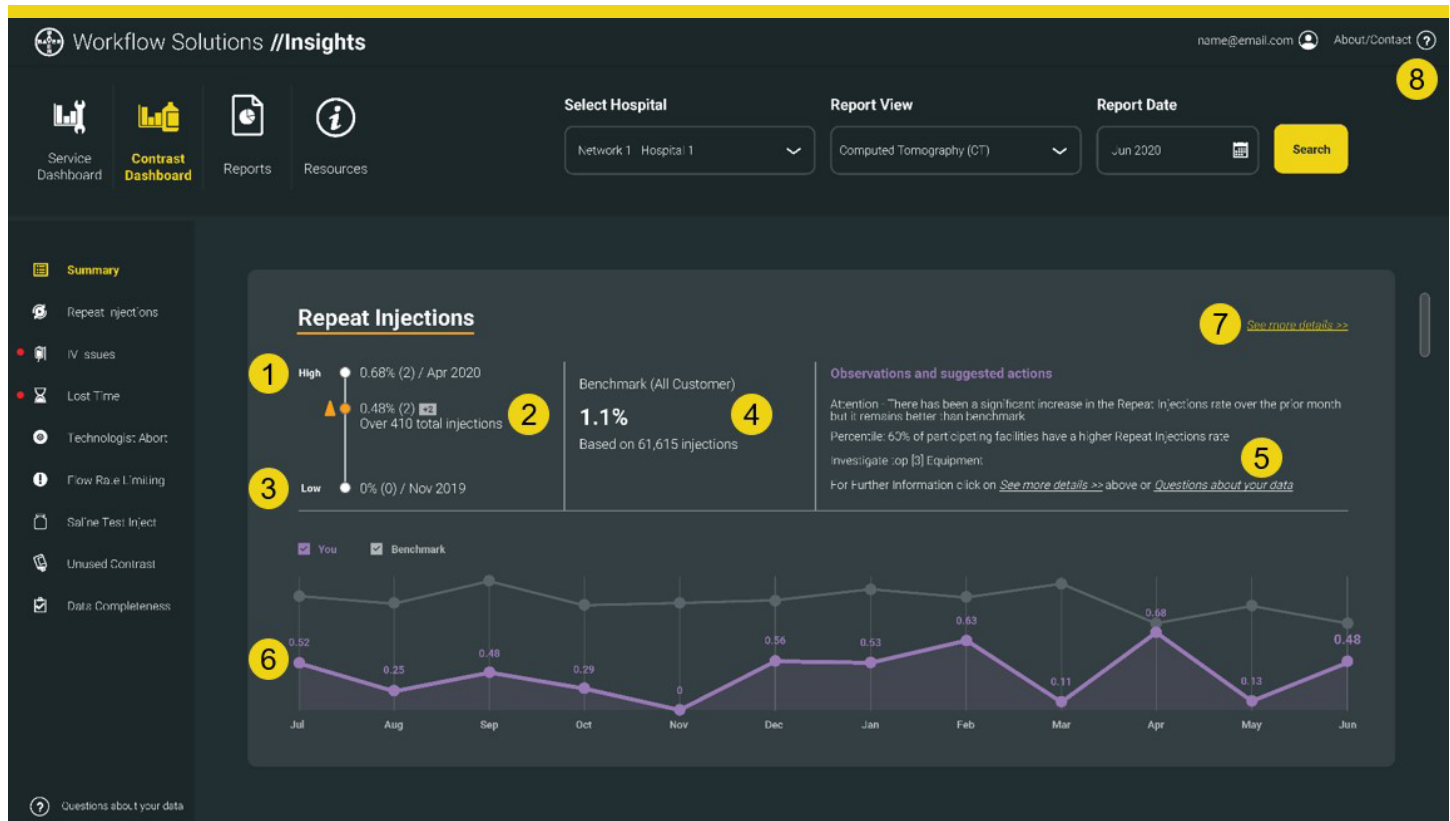
Indicator Performance color code is based on an algorithm that analyzes KPI trend change from the previous month, the magnitude of the change, and its relative position to the Workflow Solutions //Insights community benchmark. Colorization can change significantly when trend change is  $\geq 1$  standard deviation.

# Workflow Solutions //Insights

## Contrast Dashboard User Guide



### Contrast Metrics Structure – Repeat Injections



**FIGURE 2.** Contrast Metrics Screen for Repeat Injections shown above. Simulated data, for illustration only, subject to change. Operating options and feature availability may vary by country. Check with a local product representative for Bayer.

1. Highest value within the reported 12 months
2. Arrow indicating trend of the selected month versus the prior month. Color coding as described in the Indicators Status Colors legend. Values showing selected month indicator in percent and number of repeats as well as the absolute change versus prior months in the box
3. Lowest value within the reported 12 months
4. Benchmark indicator value defined as the average across the contributing database facilities
5. Observation and suggested actions relating to the indicator over the report time frame.
6. Time series of the indicator in relation to the benchmark
7. Link to see the indicator details; for example, by equipment, by protocol, and by user
8. Contact information for questions about your data and support; pop-up window with information for further assistance

#### Observations and Suggested Actions

Observations reflect the change in the monthly trend of a KPI and a benchmark percentile positioning within the Workflow Solutions //Insights connected injector community.

Suggested actions are options to investigate or monitor the supporting detail fields for an additional breakdown of the KPI contrast metrics which may assist in facility development of action plans for improvement.

# Workflow Solutions //Insights

## Contrast Dashboard User Guide



### Contrast Key Performance Indicators

#### Repeat Injections



A repeat injection is identified when multiple injections complete normally within one study. Preventable repeat injections may result in an increase in contrast delivered, additional scan time, and increased radiation to the patient.

#### Flow Rate Limiting



Flow Rate Limiting events are characterized by a mechanical decrease in flow rate or automatic disarm when the chosen maximum pressure limit is reached. A decrease in flow rate during injection may lead to suboptimal image quality.

#### IV Issues



An IV issue is identified when two injections are performed within one study of which the first was aborted. IV issues have a similar impact as repeat injections and can be targeted with catheter size and placement policies.

#### Saline Test Inject



Saline Test Inject evaluates the patency of the IV pathway at the desired flow rate when delivered by the injection system. Studies have shown that this capability may reduce extravasations of contrast.

#### Lost Time



Time is lost when injections are repeated as described in the Repeat Injections and IV Issues key indicators. This lost time quantification may indicate a disruption in normal workflow efficiency.

#### Unused Contrast



Unused Contrast is the approximate amount of contrast remaining in the syringe at the end of a single patient injection that must be appropriately discarded. In a multi-patient injection system, Unused Contrast is the approximate amount of contrast remaining in the device at the end of a delivery period.

#### Technologist Abort



Technologist Abort events are characterized by manual disarms. The events result in the premature termination of a programmed protocol and may indicate an interruption in normal workflow.

#### Data Completeness



Data completeness represents the percentage of ancillary point of care data fields completed by the technologist on the injection system user interface. Regulatory compliance, reimbursement, and patient management may require documentation of contrast and injection parameters.

#### Questions and Support

For additional support please contact your local Bayer representative.

87378535 Rev. D 2022-05-29

©2021-2022 Bayer. This material may not be reproduced, displayed, modified or distributed without the express prior written consent of Bayer. Bayer and the Bayer Cross are trademarks owned by and/or registered to Bayer in the U.S. and/or other countries. Other trademarks and company names mentioned herein are properties of their respective owners and are used herein solely for informational purposes. No relationship or endorsement should be inferred or implied. Operating options and feature availability may vary by country. Check with a local product representative for Bayer.



Bayer Medical Care B.V.  
Avenue Céramique 27  
6221 KV Maastricht  
The Netherlands  
Phone: +31 43 3585600  
Fax: +31 43 3656598



Bayer Medical Care Inc.  
1 Bayer Drive  
Indianola, PA 15051-0780  
U.S.A.  
Phone: +1-412-767-2400  
+1-800-633-7231  
Fax: +1-412-767-4120